

Contents:

- GROUP A - A.1 - Environmental Policy & Certifications**
- A.2 - Decorative High Pressure Laminate**
Duropal – Thermopal – Pellegrin
- A.3 - Illusion - 3D HPL**
- A.4 - Duropal MicroPLUS® – Antibacterial HPL**
- A.5 - Duropal - Pellegrin Compact HPL**
- A.6 - Quadra Worktops**
- A.7 - Toilet Partitions & Accessories**
- A.8 - LUMINA™ – PET gloss MDF panels**
- A.9 - RUSTICA™ – Textured 18mm MFC panels**
- A.10 - Tekform – Decorative 16mm MFC panels**
- A.11 - Senosan – High gloss acrylic MDF panels**
- A.12 - Services Information**



> Environmental Policy & Certifications



Permanent Formaldehyde Approval (E1 Certificate)



Permanent PCP Approvals



BLUE ANGEL First, eldest and most renowned environmental sign



Forest Stewardship Council



Program for Endorsement of Forest Certification schemes

The following are excerpts from the environmental policy of the manufacturer of Duropal and Thermopal high pressure laminates.

We are committed to interacting with people, the environment and resources in a responsible manner. We view the environment as an essential element of our corporate philosophy. That's why we have defined guidelines that commit us to an active approach. As a manufacturer of engineered wood products, we work with renewable resources. We use wood from sustainable forestry or recycled materials for our products.

Compliance with laws and regulations is a matter of course for our Company, just like the realization of customer requirements. In addition, we also work continuously on improving our products and environmental protection at our operating facilities.

As an international company, we want to implement our convictions at all locations to get a holistic and all-encompassing management system for the environment.

When we develop new products and manufacturing processes to satisfy our customers' needs, we look at the processes as a whole and test how ecological they are going to be. When selecting suppliers and subcontractors, we place great emphasis on ensuring that they also have a responsible attitude to the environment and their employees' safety.

We monitor and assess our processes and products regularly and aim to achieve continuous improvement. This is how we want to provide products with the highest value to our customers and to reduce the unavoidable environmental effects.

We place emphasis on maintaining an open dialogue with our employees and customers as well as the authorities and the general public. We have a transparent approach to our customers and the public about the environmental impact of the products we manufacture and the services we provide

- Permanent Formaldehyde Approval (E1 Certificate)
- Permanent PCP Approvals
- Blue Angel eldest and most renowned environmental certification
- Forest Stewardship Council Program for Endorsement of Forest Certification schemes

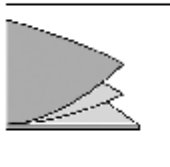


Duropal - Decorative High Pressure Laminate

Duropal® Decorative High Pressure Laminate (HPL) is a postforming grade laminate. Duropal® HPL provides a durable surface in a variety of unique decors and surface structures. Chemical resistant and reflective of current market trends Duropal® HPL is suitable for horizontal, vertical and other applications that require an aesthetic finish which is durable, stain and heat resistant from ordinary sources.

- Europe’s largest manufacturer and market leader of postform grade decorative high pressure laminate
- Manufactured to strict European standards
- Resistant to impact, scratches and abrasion
- Heat resistant
- Colour fast, UV stable
- Heat resistant and light / colour fast
- Resistant to chemicals and water vapour
- Selected decors fortified with Microplus antibacterial agent
- Design range with 122 decors and 14 surface finishes
- Sheet size 4100mm x 1300mm

PRODUCT CONSTRUCTION DUROPAL HPL



- | | |
|---------|--|
| Overlay | 1. Additional protection provided by melamine resin |
| Design | 2. Design paper – printed and melamine resin-soaked |
| Core | 3. Core – several layers of phenolic resin-soaked soda kraft paper |

Appearance

- Solid colours
- Pearlescent colours
- Timber decors
- Patterned decors
- In a variety of surface structures

Applications

- Furniture manufacture
- Commercial / Domestic interior joinery
- Worktop surfaces
- Door & drawer fronts
- Shop fitting
- Healthcare
- Sanitary areas
- Laboratories
- Partitions & wall panelling



thermopal

Thermopal High Pressure Decorative Laminate

Thermopal® Decorative High Pressure Laminate (HPL) is a postforming grade laminate. Thermopal® HPL provides a durable surface in a variety of unique decors and surface structures. Chemical resistant and reflective of current market trends, Thermopal® HPL is suitable for horizontal, vertical and other applications that require an aesthetic finish which is durable, stain and heat resistant from ordinary sources

- Colour fast, UV stable
- Manufactured to strict European standards
- Resistant to chemicals and water vapour
- 0.8mm postforming grade HPL
- 12 decors and 2 surface textures
- Sheet size 2750mm x 2020mm



PELLEGRIN

Pellegrin High Pressure Laminate

Pellegrin® Decorative High Pressure Laminate (HPL) is a postforming grade laminate which provides a durable surface in a variety of decors colours. Pellegrin® HPL is suitable for horizontal or vertical applications.

- European style designer laminates with unique patterns and decors
- 16 decors
- Sheet size 3050mm x 1525mm

Appearance

- Solid colours
- Timber decors
- Patterned decors
- In a variety of surface structures

Applications

- Furniture manufacture
- Commercial / Domestic interior joinery
- Worktop surfaces
- Door & drawer fronts
- Shopfitting
- Healthcare
- Sanitary areas
- Partitions & wall panelling



Illusion – 3D Decorative High Pressure Laminate

New in surface finish technology. Illusion by Duropal takes decorative laminate to a new level. Visually striking, Illusion creates a fascinating three dimensional appearance with enhanced depth of texture and movement, however it is smooth and inviting to the touch. Illusion is recommended for interior vertical applications.

- Manufactured to strict European standards
- Heat resistant
- Colour fast, UV stable
- Resistant to chemicals and water vapour
- 4 decors
- Sheet size 4100mm x 1300mm

Appearance

- 3D Solid colours
- 3D Pearlescent colours

Applications

- Commercial / Domestic interior joinery
- Door & drawer fronts
- Shopfitting
- Partitions & wall panelling

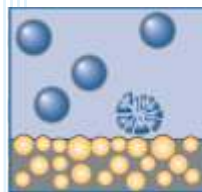
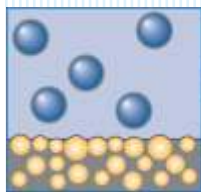


Duropal MicroPLUS® Antibacterial HPL

Exclusive to Duropal, MicroPLUS® is a postforming, antibacterial and chemical resistant High Pressure Laminate (HPL). MicroPLUS® is totally encapsulated and integrated throughout the laminate matrix thus offering life time protection from common bacteria such as, E-coli, Salmonella, Staphylococcus and Pseudomonas aeruginosa and eradicating over 99% of these harmful bacteria's with 24 hours., With no atmospheric vapour transfer or contact with skin or food transfer, MicroPLUS® is inert and 100% safe to use in all applications which require an antibacterial surface.



- Duropal MicroPLUS® offers a decisive “Plus” in Bacteria Protection
- MicroPLUS greatly reduces the transfer of bacteria via cross contamination
- Resistant to impact, scratches and abrasions
- Heat resistant
- Colour fast, UV stable
- Resistant to chemicals and water vapour
- 8 colours postforming grade 0.8mm HPL
- Sheet size 4100mm x 1300mm



-  **Bacteria**
-  **Duropal microPLUS®**
-  **Melamine Resin**

Applications

- Hospitals
- Laboratories
- Medical surgeries
- Healthcare facilities
- Hospitality
- Food preparation
- Aged & early child care
- Educational furniture
- Public amenities
- Hotels
- Bathrooms
- Worktops surfaces
- Door and drawer fronts



Duropal 10mm Compact HPL with MicroPLUS®

Duropal Compact Laminate with microPLUS® is a premium 10mm, high impact, moisture resistant, antibacterial and chemical grade decorative panel. It is self supporting with a distinctive black core that offers a sleek and elegant look to most vertical or horizontal applications.

Duropal® Decorative Compact Laminate offers the superior antibacterial protection of microPLUS®. Effectively and safely eradicating 99% of harmful bacteria without harm to humans, animals or the environment, making it the perfect choice for any application where a hygienic and durable surface is required.

For additional information on microPLUS® please refer to the microPLUS® brochure and/or technical data sheet.

- High impact, stain and abrasion resistance
- High moisture resistant
- Heat resistant
- Chemical resistant
- Colour fast, UV stable
- Resistant to organic solvents
- Fortified with Microplus antibacterial agent
- 5 decors
- Sheet size 4100mm x 1300mm

Appearance

- Solid colours
- Patterned decors

Applications

- Worktop surfaces
- Hospitals
- Healthcare
- Public areas
- Laboratories
- Educational Furniture
- Shop Fitting
- Lockers
- Office Furniture



Pellegrin 13mm Compact HPL

Pellegrin Compact Laminate is a premium 13mm, high impact and moisture resistant decorative panel. It is a self supporting panel with a distinctive black core that offers a sleek and elegant look to most vertical or horizontal applications. Pellegrin compact is ideally suited for toilet and other partitioning systems, also other applications that require a durable and high impact resistant surface.



- High impact, stain and abrasion resistance
- High moisture resistant
- Heat resistant
- 5 decors
- Sheet size 3600mm x 1500mm



Appearance

- Solid colours
- Patterned decors

Applications

- Worktop surfaces
- Public areas
- Toilet partitions
- Educational Furniture
- Shop Fitting
- Lockers
- Office Furniture

>Quadra Worktops



Quadra Worktops

Quadra worktops combine the structural integrity of an E1, 38mm thick, high moisture resistant (HMR) particleboard substrate and the outstanding quality and performance of Duropal® high pressure laminates (HPL) finished to a 3mm pencil-round radius, providing a decorative and durable, moisture, chemical and heat resistant work surface.



- Duropal, Europe's largest manufacturer and market leader of postform grade decorative high pressure laminate
- Manufactured to strict European standards
- PVA Glueline, ensures moisture and heat resistance to BS/EN204
- Tightest radiused benchtop on the market – 3mm
- Moisture proof drip-groove, designed to prevent liquid spills finding their way into drawers and cupboards.
- Chemical resistant
- Heat resistant
- Available in MircoPlus upon request
- Colour fast, UV stable
- 8 decors in 3 surface structures
- Worktop sizes:
 - 5300mm x 600mm – single roll edge
 - 5300mm x 750mm – double rolled edge
 - 5300mm x 950mm – double rolled edge

Product Detail



Quadra Profile	Duropal HPDL postformed worktop Benchtop radius down to 3mm Unique Moisture proof "V" groove and drip relief
Substrate (Core)	38mm E1 HMR particle substrate with PVAC glueline

Appearance

- Solid colours
- Patterned decors

Applications

- Worktop surfaces to:
- Commercial
- Domestic applications
- Shop fitting
- Healthcare
- Public areas
- Laboratories
- Education



Applications Guide

Our recommendations for which system and material combinations are best to use for particular project types.

FOR OFFICES AND INDUSTRIAL DEVELOPMENT:

The PEDESTAL MOUNTED & OVERHEAD BRACED, 18mm Laminated (TPI-PO-18L) system is;

The most Cost Effective

The combination of very cost effective 18mm prefinished board and the high manufacturing yield of our recommended panel heights provide the most cost efficient toilet partition system.

Easiest to Install

The simplicity of the design and light weight materials make this our easiest system to install.

Widest range of Finishes

The 18mm prefinished board is available in the widest range of colours, patterns and wood grains.

FOR HOTELS AND CLUBS:

The BLADE MOUNTED & OVERHEAD BRACED, 13mm Compact Laminate (TPI-BO-13CL) system is;

Modern

The BLADE MOUNTED design delivers a clean, contemporary aesthetic that will complement and enhance the designed interiors of today's entertainment venues.

Hardwearing

Compact Laminate has the highest wear and impact resistance of any standard toilet partition panel.

Waterproof

Compact Laminate is a must for hose out cleaning.

Cost Effective

The recommended panel heights provide the most efficient manufacturing yield and deliver the lowest possible cost.

FOR SCHOOLS:

The FLOOR MOUNTED & OVERHEAD BRACED, 13mm Compact Laminate (TPI-FO-13CL) systems is:

The Strongest

The FLOOR MOUNTED & OVERHEAD BRACED system minimises the number of components and connections by removing the need for pedestal legs or blades, and our heavy duty (0.45kg per metre) fixing channel, utilised in all our systems, is the toughest in the market.

Hardwearing

Compact Laminate has the highest wear and impact resistance of any standard toilet partition panel.

Waterproof

Compact Laminate is a must for hose out cleaning and the only suitable choices for shower partitions.

Anti-graffiti

Compact Laminate is chemically resistant and allows for easy removal of graffiti with strong chemical cleaners. (Refer to maintenance manual for details www.tpi.net.au/html/manuals_waranties.html).

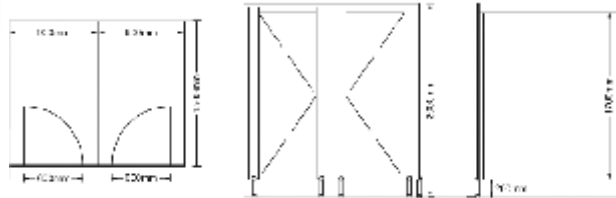
1 Your choice of system



Pedestal mounted & overhead braced (PO)

The TPI PEDESTAL MOUNTED & OVERHEAD BRACED (PO) partition system is the classic partition system design. It is available in the widest ranges of colours, materials and finishes and suitable for almost any application.

- Classic design
- Widest range of colours, materials and finishes
- Strong and durable
- Cost effective
- Easy to clean and low maintenance
- Recommended for all standard applications when selected with appropriate panel material



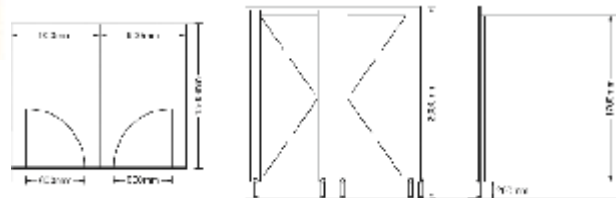
- All dimensions are nominal.
- Fixing and assembly details may vary to suit site and application conditions and ongoing product development.



Blade mounted & overhead braced (BO)

The TPI BLADE MOUNTED & OVERHEAD BRACED (BO) partition system updates the classic partition style with a modern blade mounting.

- Contemporary style
- Wide range of colours, materials and finishes
- Strong and durable
- Cost effective
- Low maintenance
- Recommended for all standard applications when selected with the appropriate panel material



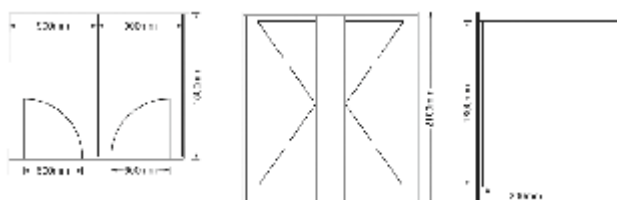
- All dimensions are nominal.
- Fixing and assembly details may vary to suit site and application conditions and ongoing product development.



Blade mounted & overhead braced (FO)

The TPI FLOOR MOUNTED & OVERHEAD BRACED (FO) partition system is an exceptionally strong partition system with a distinct contemporary aesthetic.

- Modern design
- Wide range of colours
- Extra strong and durable
- Low maintenance
- Recommended for Shopping Centres, Schools, Colleges, Universities, Pubs, Entertainment Centres, Cinemas, Sports venues, Fitness Centres and Tourism facilities



- All dimensions are nominal.
- Fixing and assembly details may vary to suit site and application conditions and ongoing product development.

2 Your choice of materials



18mm Laminated (18L)

- 18mm thick laminated board decorated both sides with a moisture resistant (MR) core.
- Dry and low abuse area applications
- Easy to clean (not suitable for hose out cleaning)
- Edged in 1 mm or 2mm ABS
- **Not available with Floor mounted Overhead braced systems**



13mm Compact Laminate (13CL)

- 13mm thick Compact Laminate is a homogenous, self supporting high pressure laminate reinforced with cellulose fibres and decorated both sides.
- Wet and Dry area applications (suitable for hose out cleaning)
- Easy to clean and graffiti resistant
- Solid black core, no edging required (typically finished with a small radius)



BOAB CERTIFIED

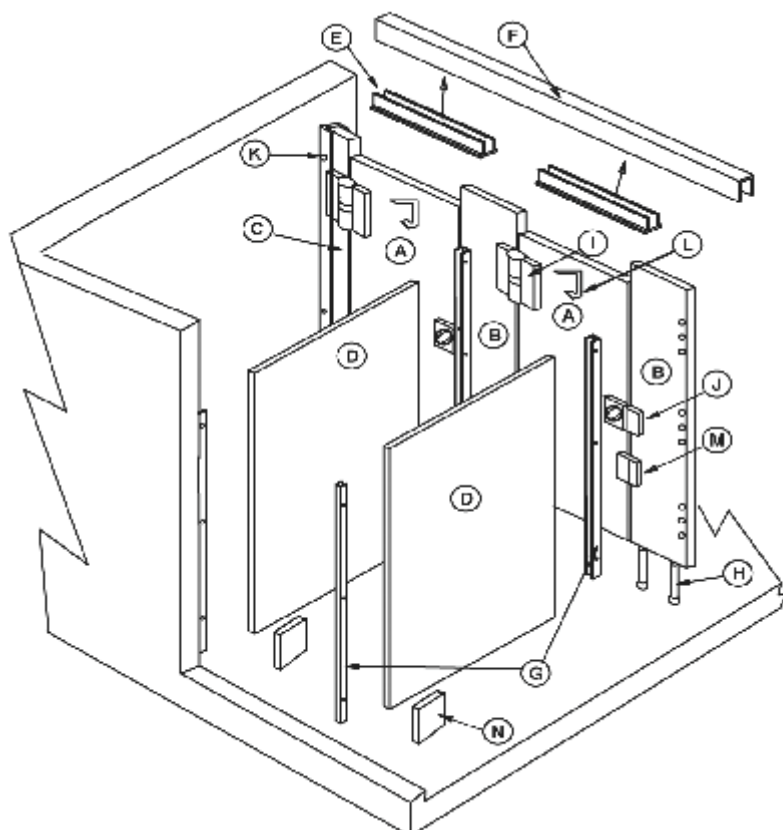
Green Star projects & GBCA compliance

All TPI U-Fix partition systems meet the standards required for Green Building Council of Australia (GBCA) Green Star projects.

Tekform RUSTICA 18mm laminated panels are FSC certified and comply with the requirements for the GBCA's highest (6 Greenstar) rating.*

Tekform PELLEGRIN 13mm Compact Laminate panels are exempted under the GBCA ratings tools and are suitable for all Greenstar projects.*

*Greenstar information correct at time of printing. TPI and Tekform advise you check with the Greenstar Consultant on your project.



- A. Door
- B. Frontal Panel
- C. Nib Panel
- D. Division Panel
- E. Overhead Brace Insert
- F. Overhead Brace
- G. Division Channel
- H. Pedestal
- I. Gravity Hinges
- J. Indicator Latch Set
- K. Nib Channel
- L. Coat Hook/Door Stop
- M. Door Bumper
- N. Support Block

3 Your choice of colour

18mm RUSTICA HMR - the look, feel and elegance of veneer without the cost



THE FORESTRY STEWARDSHIP COUNCIL OPERATES IN 46 COUNTRIES FINDING SOLUTIONS TO BAD ENVIRONMENTAL PRACTICE BY REWARDING GOOD MANAGEMENT OF THE WORLD'S FORESTS.

13mm PELLEGRIN - high performance, compact laminate



4 Your choice of details

Door furniture

TPI Series 300 (standard)

- Concealed fixings and lift off gravity hinges
- Durable die cast zinc
- Slimline with international indicator



TPI Ultima Series (optional)

- Concealed fixings and lift off gravity hinges
- Stainless Steel (304 grade)
- Clean lines and modern curves



TPI EVO Series (optional)

- Concealed fixings and lift off spring hinges
- Integrated door bumper
- Australian Design Award winner



Aluminium Profile

Square Profile (standard)



Round Profile (optional)



FAQ'S

How do I obtain a quote for my TPI U-Fix partitions?

Just complete the TPI U-Fix Quotation Request form and send it to your local Tekform branch. Please include a plan view of your cubicle layout.

How do I order my TPI U-Fix partitions?

Just send a Purchase Order to your local Tekform branch.

What's your lead time on a typical order?

10 working days for dispatch of most orders. Please confirm at time of order.

Do you deliver?

Yes, anywhere. We have our own fleet of trucks and drivers as well as specialized freight companies experienced with our products. Shipping costs are listed separately on our quotes for you to use at your discretion.

How much will my job cost?

That depends on your selected system type and material, as well as the layout and size of the cubicles. As a guide, we are consistently the cheapest and quickest option for you in quality wet area partitioning systems. Just email or fax us your system and material type (or the specification for your job) along with a floor plan and we'll get a quote back to you in within 2 working days.

Can you give me a quote without knowing the colour?

Yes, we will indicate on our quote the colour ranges we have used as a guide. Then all details including colour, system type, material and hardware specifications will be confirmed prior to order.

Do you provide a guarantee or warranty

Yes, absolutely. We provide a full 7 year warranty on all our products.

Who is TPI U-Fix?

U-Fix is an exciting new service offered by an old and trusted friend. TPI Commercial Joinery has been designing, manufacturing and installing partitions throughout Australia and the Asia Pacific for over 14 years. With over 50,000 cubicles under our belt and a highly experienced team behind us; we created TPI U-Fix as our dedicated service solution to the growing demand for the fastest and most cost effective wholesale supply only partition kit offer in the market.



TEKFORM

TPI U-FIX
PARTITION SYSTEM KITS

IT'S ABOUT CHOICE

QUOTATION REQUEST

Date:	<input type="text"/>	Phone:	<input type="text"/>
Customer Name:	<input type="text"/>	Mobile:	<input type="text"/>
Company Name:	<input type="text"/>	Email:	<input type="text"/>
Job Name:	<input type="text"/>	Fax:	<input type="text"/>

1 YOUR CHOICE OF SYSTEM

	<input checked="" type="checkbox"/> Toilet Qty.	Shower Qty.
Pedestal mounted and Overhead braced (PO)	<input type="text"/>	<input type="text"/>
Blade mounted and Overhead braced (BO)	<input type="text"/>	<input type="text"/>
Floor mounted and Overhead braced (FO)	<input type="text"/>	<input type="text"/>

2 YOUR CHOICE OF MATERIALS

18mm Laminated (18L) prefinished board on HMR substrate*	<input type="checkbox"/>
33mm Laminated (33L) prefinished board on HMR substrate*	<input type="checkbox"/>
13mm Compact Laminate (13CL)	<input type="checkbox"/>
19mm Nuvex Board	<input type="checkbox"/>
18mm 2 pack Polyurethane Painted Compressed Fibre Cement (18PCF)	<input type="checkbox"/> *not available with FO systems

3 YOUR CHOICE OF COLOUR

	Divisions, Frontals and Nibs	Doors
Laminex Commercial Palette	<input type="text"/>	<input type="text"/>
Laminex Multi-Purpose Compact Laminate Range	<input type="text"/>	<input type="text"/>
Laminex Innovations Compact Laminate Range	<input type="text"/>	<input type="text"/>
Polytec Commercial Colour Range	<input type="text"/>	<input type="text"/>
Polytec Commercial Compact Laminate Colour Range	<input type="text"/>	<input type="text"/>
Tekform 'Pellegrin' Compact Laminate Colour Range	<input type="text"/>	<input type="text"/>
Tekform 'Rustica' Colour Range	<input type="text"/>	<input type="text"/>
Nuvex Colour Range	<input type="text"/>	<input type="text"/>

4 YOUR CHOICE OF DETAILS

DOOR HARDWARE OPTIONS	DOOR HINGE DETAILS	FIXING OPTIONS
TPI Series 300 (Standard) <input type="checkbox"/>	Hold Open hinges (Standard) <input type="checkbox"/>	Square Braced Profile (Standard) <input type="checkbox"/>
TPI Ultima Series (Optional)* <input type="checkbox"/>	Hold Closed hinges (Optional) <input type="checkbox"/>	Round Braced Profile (Optional)* <input type="checkbox"/>
Evo Series (Optional)* <input type="checkbox"/>		

*Optional Items will incur additional cost

TO COMPLETE YOUR APPLICATION

- A Please attach Plan View layout drawings with each quotation request
- B Please remember to fill out your accessories order on the form provided
- C Please relax, we will look after all your partitioning needs

TEKFORM NSW/ACT
t. (02) 9826 0007
f. (02) 9826 0074
e. sales@tekform.com.au

TEKFORM QLD
t. (07) 5529 3003
f. (02) 5529 3050
e. sales@tekformqld.com.au

TEKFORM VIC
t. (03) 9737 5566
f. (03) 9761 4553
e. sales@tekformvic.com.au



LUMINA™ - Superior PET Gloss MDF Panels

LUMINA™ is a 16mm, E1 rated, decorative high gloss medium density fibreboard (MDF) panel. Utilizing new technology which allows a recycled PET (polyester) gloss film to be laminated onto an MDF substrate. LUMINA™ provides a high scuff, stain and UV resistant surface which offers superior durability whilst maintaining colour integrity. The reverse side of the board is colour matched in a durable matt melamine finish providing an improved visual effect to joinery doors and panels.

- Manufactured to strict European standards
- Environmentally friendly and sustainable
- PET foil offers low VOC's compared to polyurethane paint systems
- High stain and scuff resistance
- Superior depth of colour and gloss finish > 85%
- Heat resistant
- Colour fast, UV stable
- Non-yellowing
- Easy clean surface
- 10 decors
- Sheet size 2650mm x 1030mm

Appearance

- Superior high gloss finish
- Solid colours
- Pearlescent colours
- Timber decors

Applications

- Furniture manufacture
- Commercial / Domestic interior joinery
- Door & drawer fronts
- Shop fitting
- Partitions & decorative panelling



RUSTICA™ - Textured 18mm Pre-finished MFC Panels

RUSTICA™ is an E1 rated, 18mm, triple-layered, moisture resistant melamine faced chipboard (MFC) which is pre-finished to a hardwearing decorative surface ready for use.

RUSTICA™ reflects current trends toward characteristic textured structures, and is particularly impressive with its satin-matt effect.

RUSTICA's unique tactile surface, offers an economical alternative to natural timber veneers, providing the user with a durable, UV resistant and maintenance free surface. Equal in both colour and surface structure,

RUSTICA™ MFC & Duropal HPL allows an indistinguishable match when combining both products together. All RUSTICA™ decors are matched with a 1mm high impact Durotrim edge.



- Distinct surface structure
- Natural wood feel and appearance
- Colour fast, UV stable
- Duropal and Thermopal decors matched in HPL

- 15 decors

- Sheet sizes:

Duropal 2650mm x 2100mm

Thermopal 2750mm x 2050mm

Pellegrin 2400mm x 1200mm

Appearance

- Timber decors

Applications

- Commercial / domestic and cabinetry
- Furniture manufacture
- Shop Fitting
- Door & drawer fronts
- Partitioning
- Decorative panelling



Tekform's decorative 16mm MFC panels are E1 rated, triple-layered, moisture resistant melamine faced chipboard (MFC) pre-finished to a hard-wearing decorative surface ready for use. Most decors are matched in both colour and surface structure to a corresponding high pressure laminate thus allowing an indistinguishable match when combining both products together. All Tekform decorative 16mm MFC panels decors are matched with a 1mm high impact Durotrim edge.

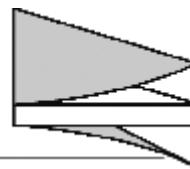


- Resistant to impact, scratches and abrasion
- Resistant to household fluids and water vapour
- Heat resistant
- Colour fast, UV stable
- Design range with 34 decors and 7 surface textures
- Sheet sizes:

Duropal 2650mm x 2100mm

Thermopal 2750mm x 2050mm

Melamine Paper
Particleboard HMR E1
Melamine Paper



Appearance

- Solid colours
- Pearlescent colours
- Timber decors
- Patterned decors

Applications

- Commercial / domestic joinery and cabinetry
- Furniture manufacture
- Shop Fitting
- Door & drawer fronts
- Partitioning
- Decorative panelling



Senosan – High Gloss Acrylic MDF Panels

Senosan represents the epitome in gloss decorative panels, offering unsurpassed depth of colour and a mirror gloss finish.

Senosan panels are pre-bonded with a 1mm high gloss acrylic foil and available in single or double sided 18mm MDF panels. Senosan is ideal for vertical interior joinery and cabinetry and applications where a high quality gloss finish is required.

- Mirror / piano gloss finish
- Low distortion levels
- Superior depth of colour
- Colour fast, UV stable
- Non-yellowing
- No batch-to-batch color deviation
- Recyclable
- Environmentally friendly
- Free of hazardous tin organic contents
- Free of heavy metals
- No hazardous solvents released during application
- No hazardous fumes when incinerated
- 5 colours
- Sheet size 2800mm x 1030mm

Appearance

- Solid decors
- Metallic decors

Applications

- Commercial / domestic joinery and cabinetry
- Furniture manufacture
- Shop Fitting
- Door & drawer fronts
- Partitioning
- Decorative panelling



Services Information

Tekform offers a comprehensive sample and information service to professionals, trade and the public.

Services we provide

- Decorative surface colour / decor samples
 - Chip - 70mm x 55mm
 - A6 Size - 120mm x 82mm
- Laminate sample boards for wall displays (trade only)
- Decorative surfaces sample folders (trade only)
- Copies of technical data sheets, brochures and newsletters are available on line
- Promotional merchandising material
- Branch representatives located at each Tekform site to call on:
 - Architects
 - Designers
 - Design Showrooms
 - Cabinet makers

Please visit us at www.tekform.com.au for specific regional information or email us at info@tekform.com.au for ordering decorative surface samples.